

QSL: Direct vs Bureau

By N8RMA

Updated 17 January 2024 by AE4NT

Direct

You send each card directly to the operator.

Postcard Postage (\$.53)

\$5.30 – postage to send 10 QSL's

\$.53 per QSO Total

Regular Postage (\$.68)

\$6.80 – postage to send 10 QSL's

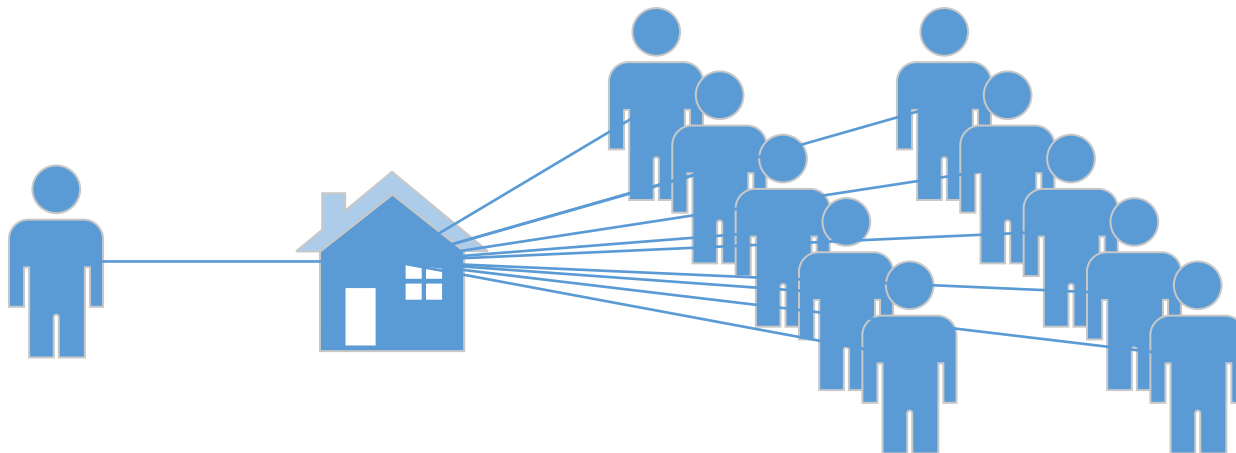
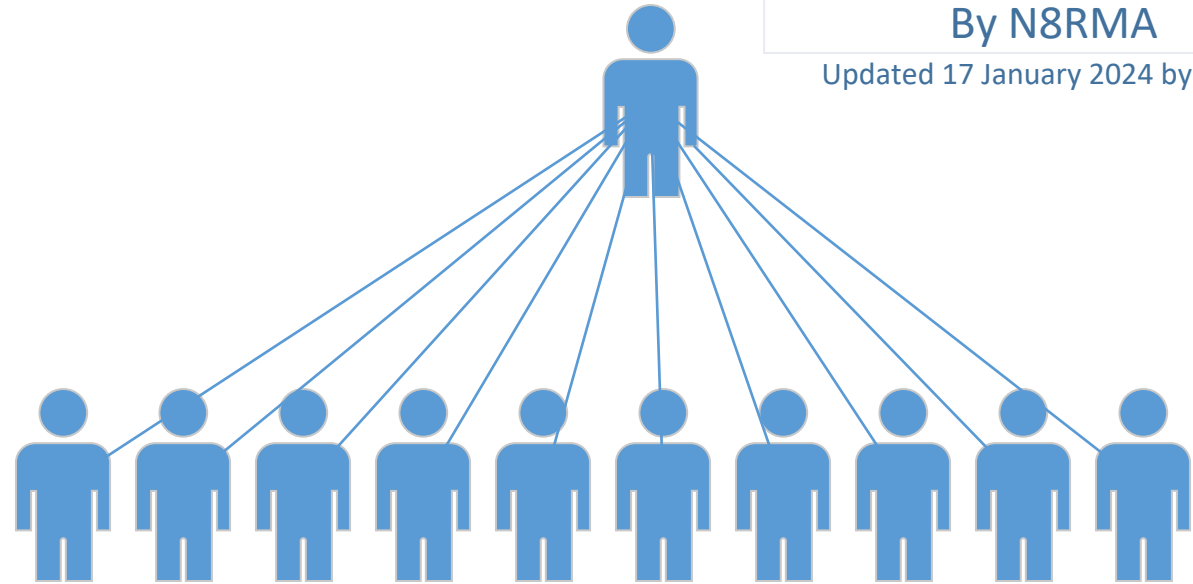
\$.68 – per QSO Total

Return SASE Included

\$6.80 – postage to send 10 QSL's

\$6.80 – postage SASE

\$1.36 – per QSO Total



Bureau

You provide either SASE's or funds to the bureau, which acts as a central location to send and receive cards from.

SASE

\$.68 – return SASE for cards

\$.68 – postage to send SASE

\$.68 – postage to send 10 QSL's

\$.21 per QSO Total

Funds

\$.19 – return envelope

\$.68 – return postage

\$.68 – postage to send 10 QSL's

\$.16 per QSO Total

These are examples and the costs are only estimates to show how a bureau works. Actual costs may vary from bureau to bureau.

Updated to reflect USPS postcard and first-class one ounce envelope rate increases as of 20 January 2024.