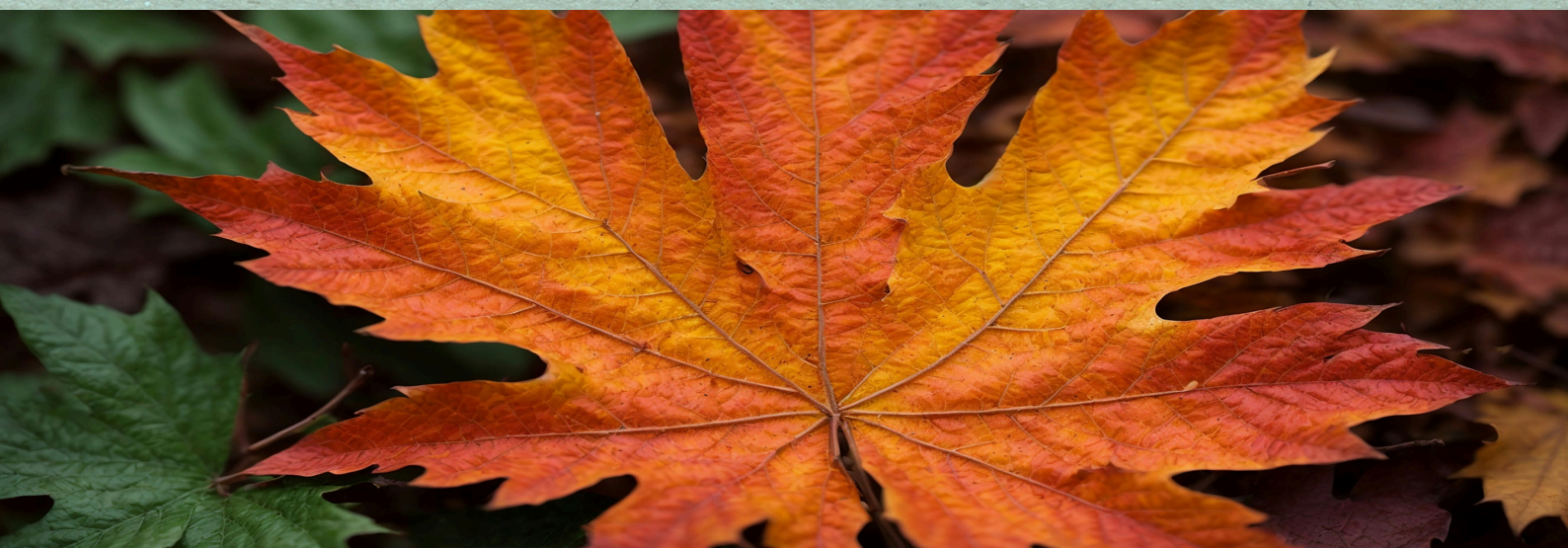


THE 3905 CENTURY CLUB

THE
CENTURION
NEWSLETTER



WELCOME TO FALL AND THE SEPTEMBER 2024 EDITION!

Hello all! This edition is going to be an abbreviated version of the Centurion focused on the upcoming eyeball travel schedules of our members. I would like to thank Debbie, K9DBB for her assistance in compiling the club & special event information and also everyone bringing these contacts to the nets for all of us on the way up to Laconia, NH.

As always, please continue sending me your articles to aa1qw@startmail.com by the 20th of each month to be included in the next month's edition. I'm looking forward to lots of eyeball write ups and photos for upcoming editions (hint, hint).

73! -Brian, AA1QW

REGISTER NOW!



The 47th Annual 3905 Century Club Eyeball is almost here! Come join us in Laconia, NH **September 05-08, 2024**, for what is always a great time.

Registration is \$95.00.

Please visit www.3905ccn.org/eyeball2024.php to register and for more information.



Photo from Eyeball 2003 in Kansas City, MO

FROM THE PRESIDENT



From the Prez,

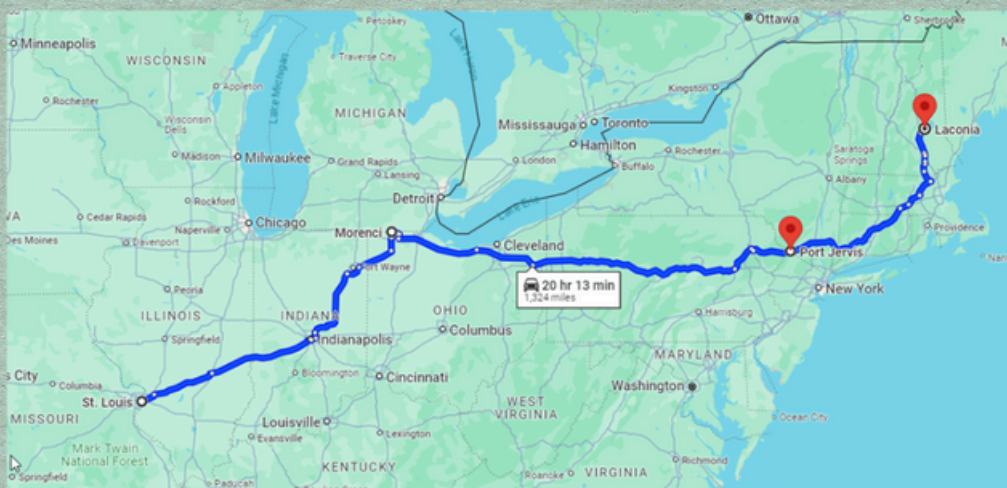
Laconia, NH Bound

Folks, by the time you read this all roads will lead to the Eyeball in Laconia, NH and many of our members will be enroute north. In this issue of the Centurion you will find schedules of stations heading mobile with their location to the eyeball including a list of stations that will also bring club stations and/or special event stations. I would suggest that you print this issue and keep it on hand.

From September 1st through the 10th we have modified the protocol of the nets and will only allow 1 call per round thus suspending the free calls with new stations and new stations will be limited to 1 call. Hopefully this will assist in making our nets run a little faster and giving stations more opportunities to work more stations. I know of one member who will be putting 30 stated on the nets surrounding the eyeball. My goal is to active 10 new states for myself.

So my message for everyone is to set aside the Eyeball week and work everyone.

For those interested here is a map on my sojourn from St Louis to Laconia:



FROM THE PRESIDENT (CONTINUED)

Here is the planned route for KL7OR and WA6LBU (all dates zulu):

- Sep 4 Indiana/Michigan state line
- Sep 5 Pennsylvania/New Jersey/New York tripoint
- Sep 6 Vermont/New Hampshire state line
- Sep 7 Vermont/Maine State line
- Sep 8 Early nets Mobile Massachusetts
- Sep 8 Late Nets Connecticut/Rhode Island state line
- Sep 9 Unknown
- Sep 10 Somewhere in Kentucky

Eyeball Station Club

Here is a quick reference for the planned club and special event call signs members traveling to the eyeball are planning to use. Current at time of publishing.

STATION	CLUB	SPECIAL EVENT
AA1NA	W5NA	K5F
AA1NZ		
AA1QW	AK1SS	W1N
AC2MT	WW8WWW	K2E
AE4NT		
AI4K	AI7B	N4A
K1UU	AC1UB	
K8YEK	KG8UTS	N7H
K8GIB	K1CCN (card req)	
K9DBB	WD0W	W4A
K9GWS	KK0LD	W4N
KB1XP	WE4FUN	
KB8UEY	W8BI (card req)	N8L
KC1YL		
KF7HNC	NB0AR	W0N
KG4ZOD	WF4ROG (card req)	
KJ7S	*LINK	*LINK
KL7OR	KR0DS	K7H
KU1V		
N0PUI	KC0VAK	W0L
N1ABY		
N2XTT	NJ2LH	
N3VEJ	W3FT	K3Z
N3WD	K3DUH (card req)	W1E
VE3CMB	VA3TUV	
W1IP	W4PRK	
W5WJN		N1H
W6PNY	KP2JR	N0B
W8NET	NN0PE	N8H
W9ROG		
WA2JIM	KC2TQH	W2W
WA8LBU	AF5NN	K5H
WF4H		
WK1J		
WN1F	W1OO	

QSL Card Requirements

With so many of us planning to be mobile & portable with the eyeball, it was suggested by Dick WK1J, to remind everyone of the importance of including all of the pertinent information on QSL cards you are sending out.

In the May edition, I posted a similar reminder however as someone who works portable quite frequently, I still see a lot of cards arriving with missing information and it's not just from new stations.

There is a great refresher that can be found on our website:

<https://www.3905ccn.org/qslcardinfo.php>

Below is an example from that page showing a card with all the required information included:

K3QSL						
John Doe 123 Main St Anytown, SC 29150 USA Sumter County 3905 Officer Points: Webmaster						
						
Shep, thanks for the NJ contact on the 3905CC 40M SSB Early Net. I was mobile in the SC capital. 73, John, K3QSL 40M SSB 100-Pt #9999						
Confirming 2-way QSO with	Date	UTC	MHz	2xMode	Sent	Rcvd
KC2PUF /M NJ	21-Aug-2010	0045	7.178	SSB	59	59

Please also remember that many club stations and special event stations will be "NCN" or no card needed.

Thank you!

Simple logging of Portable/Mobile in Netlogger

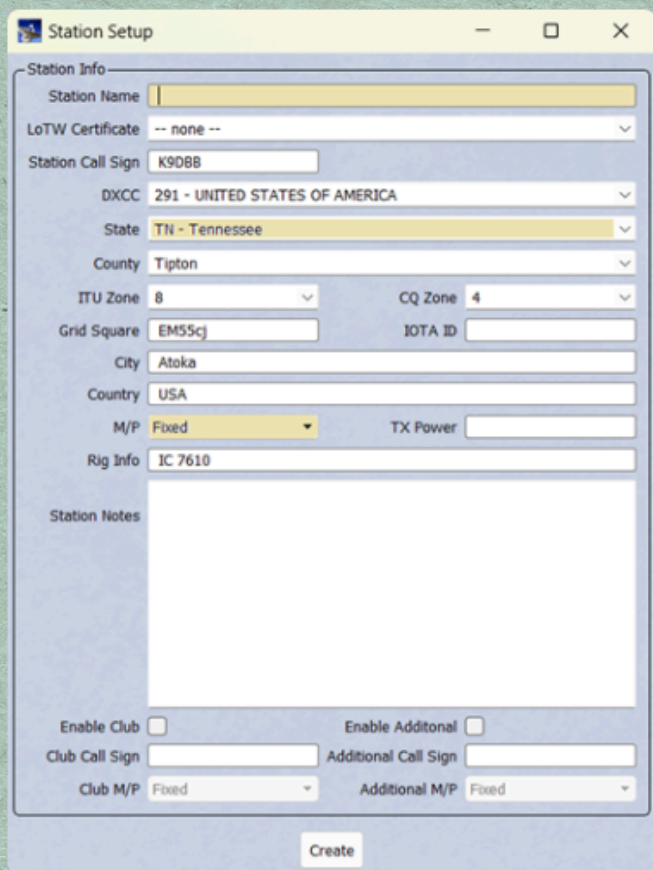
Submitted by **73 de K9DBB & AI4K, Deb and Dave (aka D & D)**

With the Eyeball just around the corner and so many folks operating Portable and Mobile I thought I would remind everyone about the “Station Location” function in Netlogger. Using Station Locations is a huge time saver and allows you to capture your correct State and Status for contacts made while not at your fixed home QTH.

By default; your station location is Fixed in your home state. Makes sense; doesn't it. Just look in Netlogger under 'Setup' and 'Station Location' and you will find your default.

Going mobile in New York?

Click the 'Default' and chose 'Copy and Edit' (you will get a similar screen to this).



Enter a new station name: ex. K9DBB/M NY
– this name is simply a label.

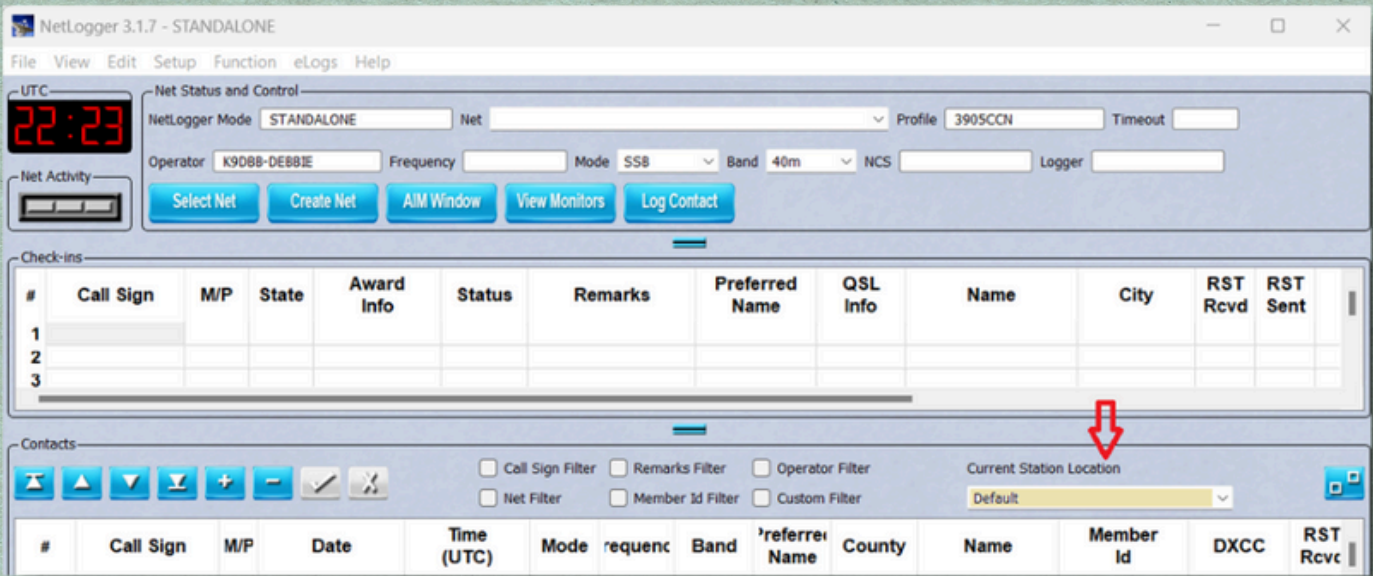
Change the State: ex. New York.

Change the M/P: ex. Mobile.

Click “Create”.

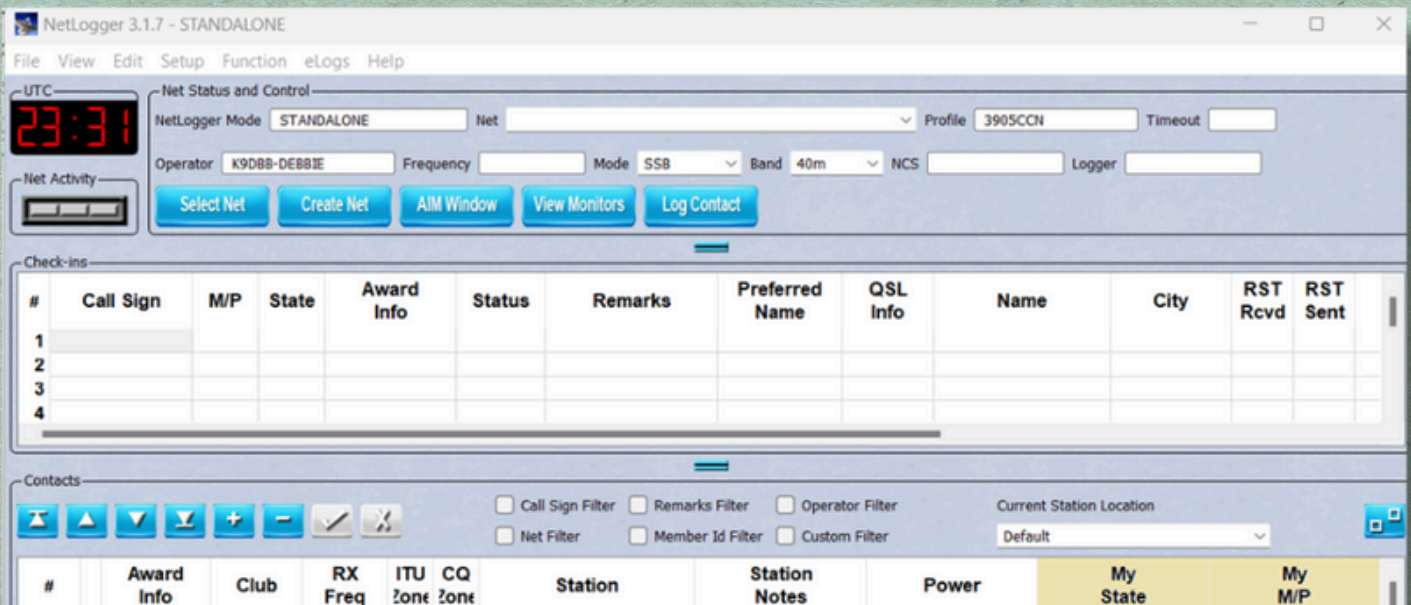
You've now created a station location for
Mobile in New York

It will now appear in the “Current Station Location” drop down box.



Make sure to choose it before logging any contacts you make while you are mobile in New York.

When you log contacts under this Station Location it will show your State as NY and your Status as M in your logged contacts IF you have those columns selected to show. To see those columns, go to 'Edit' then 'Contacts Table' and then 'Enable/Disable Columns'. Make sure 'My State' and 'My M/P' are checked. These columns will now show in your worked contacts area on Netlogger.

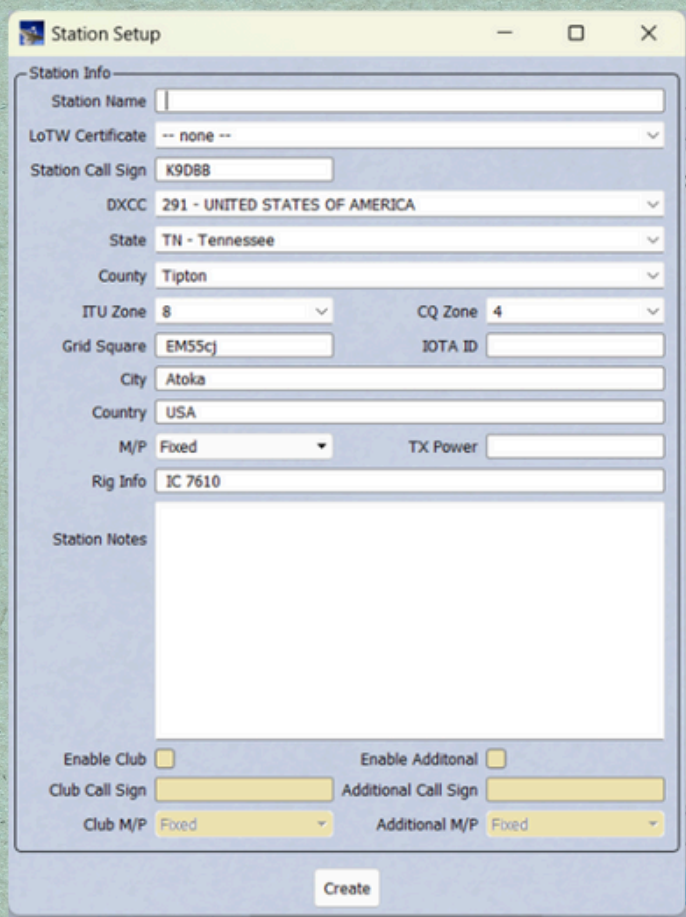


You can set up as many Station Locations as you need by using 'Copy and Edit' of any existing station location. You can also delete them from your list without affecting any contacts you made while using that station location.

TIP – When using this feature; get in the habit of checking your 'Current Station Location' before each net – it's easy to forget to change it back to default!

Another very helpful feature of using Station Location is that you can simultaneously log a Club and Special Event that you have brought to the nets.

Follow the same process above for creating a new station location. Notice at the bottom that there is a place for a Club and Additional Call Sign.

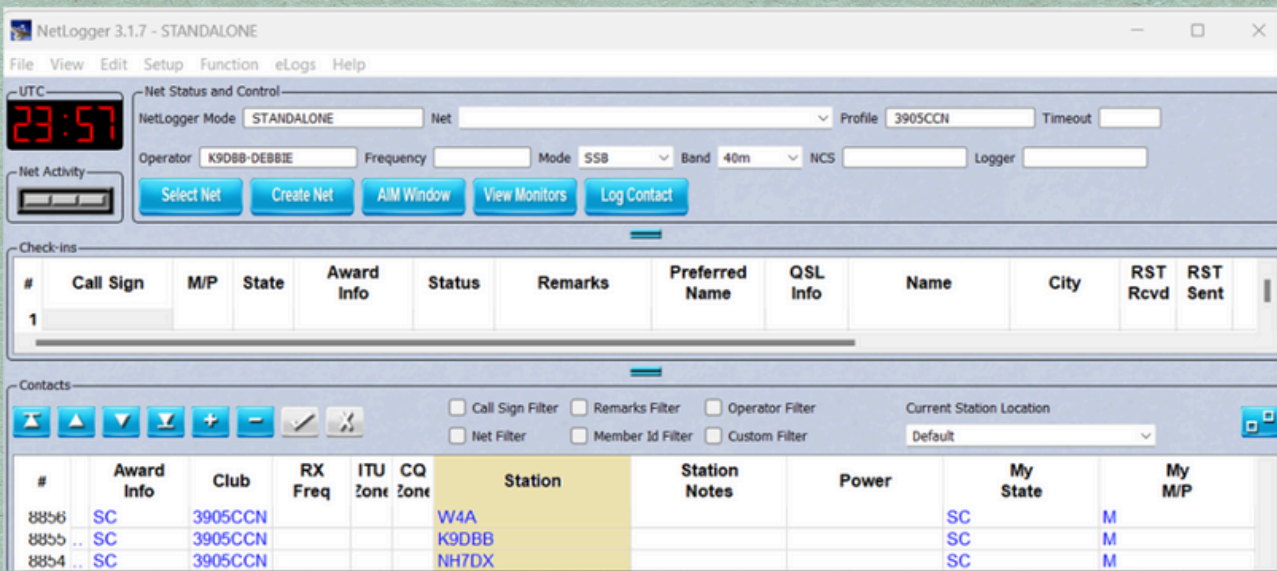


'Check' Enable Club, Enter the Club Call Sign and Set the Status.

'Check' Enable Additional for a Special Event you are bringing, Enter the Call Sign and Set the Status.

When you log a contact; 3 separate log entries will be created – Your Call Sign, Club Call Sign and Special Event Call Sign.

Below is how it looks when it logs the 3 call signs. You can easily see the different 'Station'

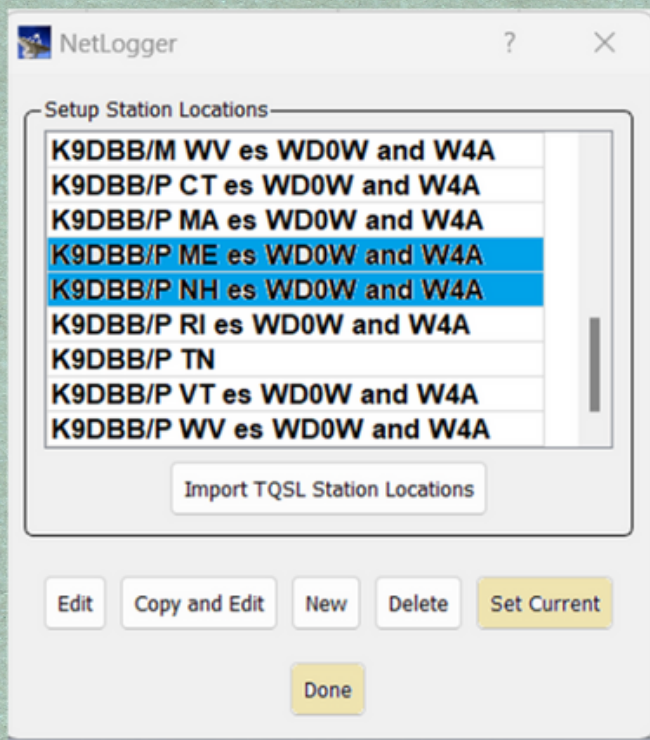


Wow! That's great but what if I'm at a State Line or Tripoint? We've got you covered!

You can select multiple 'Station Location' entries to use.

To do this first make sure you have a station location set up for each state you will be working from.

Then go to 'Edit' then 'Station Location' and click each location that you will be at. (You will need to hold the "Ctrl" key down while selecting them). Once you have them all selected; Click 'Set Current' and then 'Done'.



In this example when I log a contact I will get 6 log entries because each of the 2 Station Locations has a club (WD0W) and Special Event (W4A) enabled on them.

K9DBB/P ME
 WD0W/P ME
 W4A/P ME
 K9DBB/P NH
 WD0W/P NH
 W4A/P NH

The amount of time you save using Station Locations is worthwhile. Not to mention; less errors are made is logging contacts.

Fantastic but now I have a ton of Call Signs mixed in with my call. Can I sort them? Yes you can.

To sort the different call signs you need to create a “Custom Filter”
Go to ‘Edit’ then to ‘Custom Contacts Filter’

Condition	Field Name	Operator	Value
	Station	=	WD0W
ignore	Call Sign	=	
ignore	Call Sign	=	
ignore	Call Sign	=	

Apply Done Clear

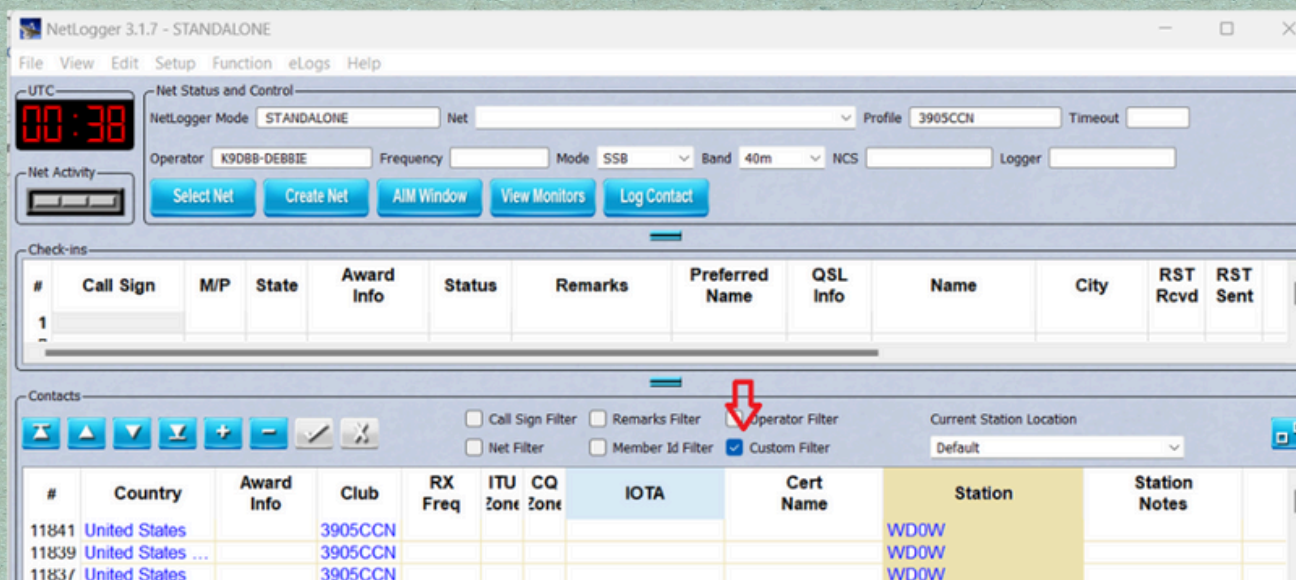
Point Field Name' to Station.

Leaves the 'Operator' as the = sign

Type the Call Sign you want to see into "Value" field.

Click 'Apply' then 'Done'

To use your 'Custom Filter' just click the box next to it. You will now only see log entries for that Call Sign



You can uncheck it to see all the log entries for all call signs.

You can only have one Custom Filter made at a time. You can delete the filter by going back into 'Edit' then to 'Custom Contacts Filter' and clicking 'Clear' then 'Done' and unchecking the box next to it.

So there you have it! Dave and I were thrilled to learn about Station Locations – It has saved us a ton of time when we have gone on our travels. We don't claim to know it all so if you have any other tips that would be helpful, we'd be glad to hear them.

As Always, reach out if you have any questions that we may be able to assist with. We love this Club and its Members and Participants.

73 de K9DBB & AI4K

Deb and Dave (aka D & D)

Eyeball Travel Schedule

Here are the planned stops that our members have submitted to me at time of publishing. Please note these plans are subject to change along the way. Dates are in local time.

K6YEK

21-23 Aug:	Montana
24 Aug:	Bismarck, ND (SC)
25 Aug:	Minnesota
26 Aug:	Wisconsin
27-30 Aug:	Illinois
31 Aug:	Indianapolis, IN (SC)
01 Sept:	Indianapolis, IN (SC)*
02 Sept:	Michigan*
03 Sept:	Pennsylvania*
04 Sept:	New York*
05 Sept:	New Hampshire*
06-07 Sept:	Vermont/Maine*
08 Sept:	Boston, MA (SC)*
09 Sept:	Providence, RI (SC)*
10 Sept:	Hartford, CT (SC)*
11 Sept:	New Jersey*
12 Sept:	Delaware*
13 Sept:	Maryland*
14 Sept:	Virginia*
15 Sept:	South Carolina
16 Sept:	Atlanta, GA (SC)
17 Sept:	Alabama
18 Sept:	Tennessee
19 Sept:	Arkansas
20 Sept:	Oklahoma
21-22 Sept:	New Mexico
23 Sept:	Arizona

24 Sept: Phoenix, AZ (SC)
25 Sept-03 Oct: California
04 Oct: Nevada
05 Oct: Boise, Idaho (SC)
06 Oct: Washington
07 Oct: Idaho

AA1NA (*denotes addition of AC2MT)

31 Aug: Tennessee
01 Sept: Harrisburg, PA (SC)
02 Sept: Albany, NY (SC)*
03 Sept: Montpelier, VT (SC)*
04 Sept: Concord, NH (SC)*
08 Sept: Augusta, ME (SC)*
09 Sept: Boston, MA (SC)*
10 Sept: Providence, RI (SC)*
11 Sept: Hartford, CT (SC)*
12 Sept: Dover, DE (SC)*
13 Sept: Trenton, NJ (SC)
14 Sept: Georgia
15 Sept: Mississippi

WA2JIM

05 Sept: MA/VT line
06-07 Sept: /m and /p NH (eyeball site)

AE4NT

26 Aug: Columbia, SC
27-28 Aug: New River Gorge National Park, West Virginia
29 Aug-02 Sept: Possibly Pennsylvania on one of these nights
03 Sept: CT/MA line
04-07 Sept: Eyeball
08 Sept: RI
09 Sept: DE (possibly DE/MD line)

W5WJN

25 Aug: IN/OH State Line
26 Aug: PA/MD State Line
27-28 Aug: New York
29 Aug: VT/MA State Line
30-31 Aug: Connecticut
01-04 Sept: TBD; Likely RI/ME/NH
05-07 Sept: At the eyeball
08-11 Sept: En route home/will try to hit a few states

N3VEJ & N3WD

31 Aug: Albany, NY (SC)
01 Sept: Montpelier, VT (SC)
02 Sept: Augusta, ME (SC)
03 Sept: Providence, RI (SC)
04-07 Sept: Eyeball area

W8NET

04 Sept: New Hampshire
05 Sept: New Hampshire or ME/NH
06 Sept: VT/NH line or Concord, NH (SC) mobile
07 Sept: New Hampshire
08 Sept: NY/PA or OH mobile

Be part of the next issue

Send in your articles - remember the deadline!

Centurion Deadline Reminder: Please remember my deadline is the 20th of each month for inclusion in the next edition.

Please send your articles to AA1QW@startmail.com. Thank you.