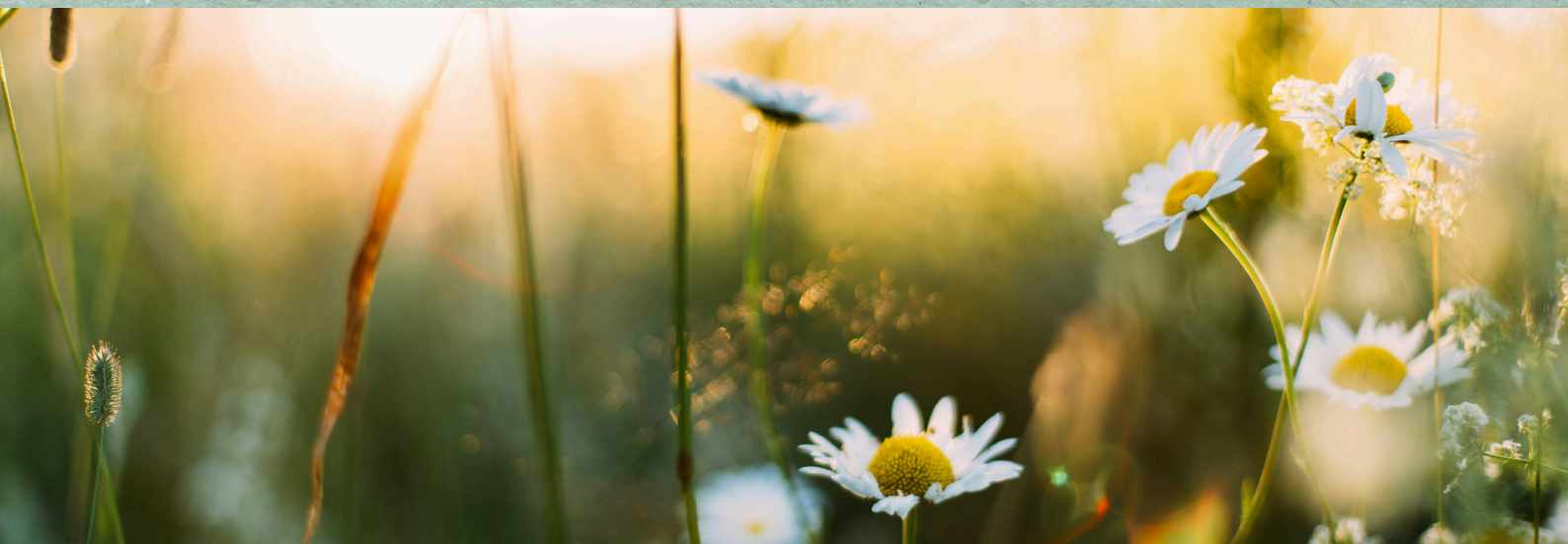


THE 3905 CENTURY CLUB

THE
CENTURION
NEWSLETTER



WELCOME TO SPRING AND ANOTHER GREAT EDITION!

Welcome to April edition of the Centurion! I hope you are starting to see signs of spring at your QTH and getting ready to dust off those antenna projects you have been planning over the winter.

In this edition, we have an update on the 2025 eyeball which will be coming up this August.

As always, please continue sending me your articles and suggestions to aa1qw@startmail.com. The deadline for the next edition (June) will be May 20. I appreciate everyone's contributions and feedback.

73! -Brian, AA1QW

FROM THE PRESIDENT



On March 1st the club hit a significant milestone in regards to the definition of a QSL and the impact of club members exchanging QSLs. No longer is it a requirement to possess a physical QSL card in order to apply for Century Club Awards.

As for the requirements of the club, a **QSL** is a confirmation of a two-way radio communication that they have made contact with another operator and at a minimum contains the following:

- Call signs of both stations
- Date and time (utc)
- Band (or frequency)
- Mode
- Location of both operators

In the past club members have exchanged physical cards by mail either by using the club QSL bureau or direct mail. With the changing times of postal rates going through the roof the club made the decision to use as an alternative QSL digital images. Basically what this means is the QSL can be sent digitally via mail to another station, or a station may use one of several QSL matching services like eQSL, QRZ, or LOTW to confirm contacts and these digital QSLs may be used for club awards.

FROM THE PRESIDENT (CONTINUED)

Over the next several months in addition to the "QSL Guidelines" page on the clubs website more information will be made available including a few videos to help educate our members. I am especially excited about this change because it marries nicely with changes made to my Century Club Logger software. Finally I would like to mention that Dave Yarbrough, AI4K, has developed a really slick website (quickqsl.com) that allows anyone to export data from NetLogger (or other logging software) that will create and email QSLs. Take a look at his website, he has a lot of nice options.

And finally Clay Mayrose, WA6LBU put online all of the information for this years Eyeball in Guthrie Oklahoma this coming August. The direct link is <https://3905ccn.org/eyeball.php>.

Dean Davis, KL7OR, Master # 80

BEN'S COLUMN

Notes from the Awards Secretary

April 2025

By Ben Goldfarb, AE4NT



Aren't you all glad winter is over? Spring has arrived, so northerners can go out, wash the car, and start playing outside for a change. For us here in Central Florida, spring portends the all too soon beginning of the long, sweltering summer, replete with 95-degree days and humidity to match. In any case, consistent with the spring theme, I changed my mugshot to portray me on a verdant golf course at sunset while in real life I sit here in my office typing at you. (Note the bags under my eyes. Aside from being old, I stayed up too late last night writing this thing).

This month, I will answer a couple of frequently asked questions about the Club's new, expanded QSL requirements. Also, I will discuss some promising Awards Committee ideas in the works for improving two of our iconic awards. I'll wrap up this column with a reminder about some awards that are going away at the end of April.

New QSL Requirements!

Great news! The Board of Directors has enhanced the flexibility of QSL documentation beyond the traditional postcard-size QSL card. Members now have more convenient ways to confirm contacts, including QRZ.com, LoTW, Clublog, QRZCQ, traditional cards, and eQSLs as previously permitted. To help members smoothly adapt to this exciting change, [an information page](#) exists on the Club website. It will be regularly updated to keep everyone clearly informed.

Additionally, we are preparing an easy-to-use FAQ to address frequent questions about this new process. Here are the answers to two common queries we've received since launching the new guidelines:

Using Contacts Prior to March 1, 2025

Can I use the new QSL confirmation methods for contacts made before March 1, 2025?

Absolutely! According to The 3905 Century Club Constitution, changes approved in the current month's meeting become effective the first day of the following month. While the motion to implement the new procedure is effective March 1, the motion places no restrictions on the date of contacts you can document with these new methods. Thus, starting March 1, 2025, you're encouraged to document past contacts that may not have been previously confirmed by traditional cards.

One primary reason for this positive change was the Board's desire to ensure members get credit for genuine contacts, especially in a time of rising postal costs and decreasing postal reliability. Although electronic methods have some limitations, they significantly enhance opportunities for members working on major awards such as our progressive awards and the DX award. This update means many of your older contacts lacking a paper QSL can now be confirmed and credited!

Providing Information Required for Particular Awards

Another common question is, **"Can I use these new methods for awards requiring specific information that does not appear in the electronic confirmation?"** The straightforward answer is that specific required information must be clearly provided within the original electronic confirmation, but not all methods can satisfy our information requirements. *To determine which specific information is required, please read the award application thoroughly for directions.*

Electronic QSL methods include essential details like call signs, dates, times, frequencies, and modes of contact, typically sufficient for basic confirmation. However, certain awards necessitate extra details—such as 100-Point Award numbers, Club offices held, or National Park names—that must come directly from the original QSL issuer. Inscribing additional information onto electronic QSL confirmations is prohibited. Alterations invalidate the confirmation.

If an award requires that the station contacted be listed as mobile or portable along with its operating location, the QSL method must be capable of conveying those facts. Additionally, for our many awards requiring specific details (e.g., national park name, Old-Timers certificate number, 100-Point Award certificate number, etc.), members must use confirmation methods that inherently include this information. This guideline ensures transparency and maintains award integrity, a hallmark of our awards system.

Remember, providing the necessary evidence is always the applicant's responsibility. Although Area Awards Managers (AAMs) may assist by giving helpful advice, they aren't expected to conduct research to validate claims. To keep the award process smooth and efficient, always ensure your confirmations explicitly contain all required information as received and have not been altered.

We're excited about these new improvements and believe they will greatly enhance your experience within the Club. Though implemented less than a month ago, we are already aware of members who used the new methods to achieve awards for which they had been waiting for QSLs. Check your logs for similar opportunities!

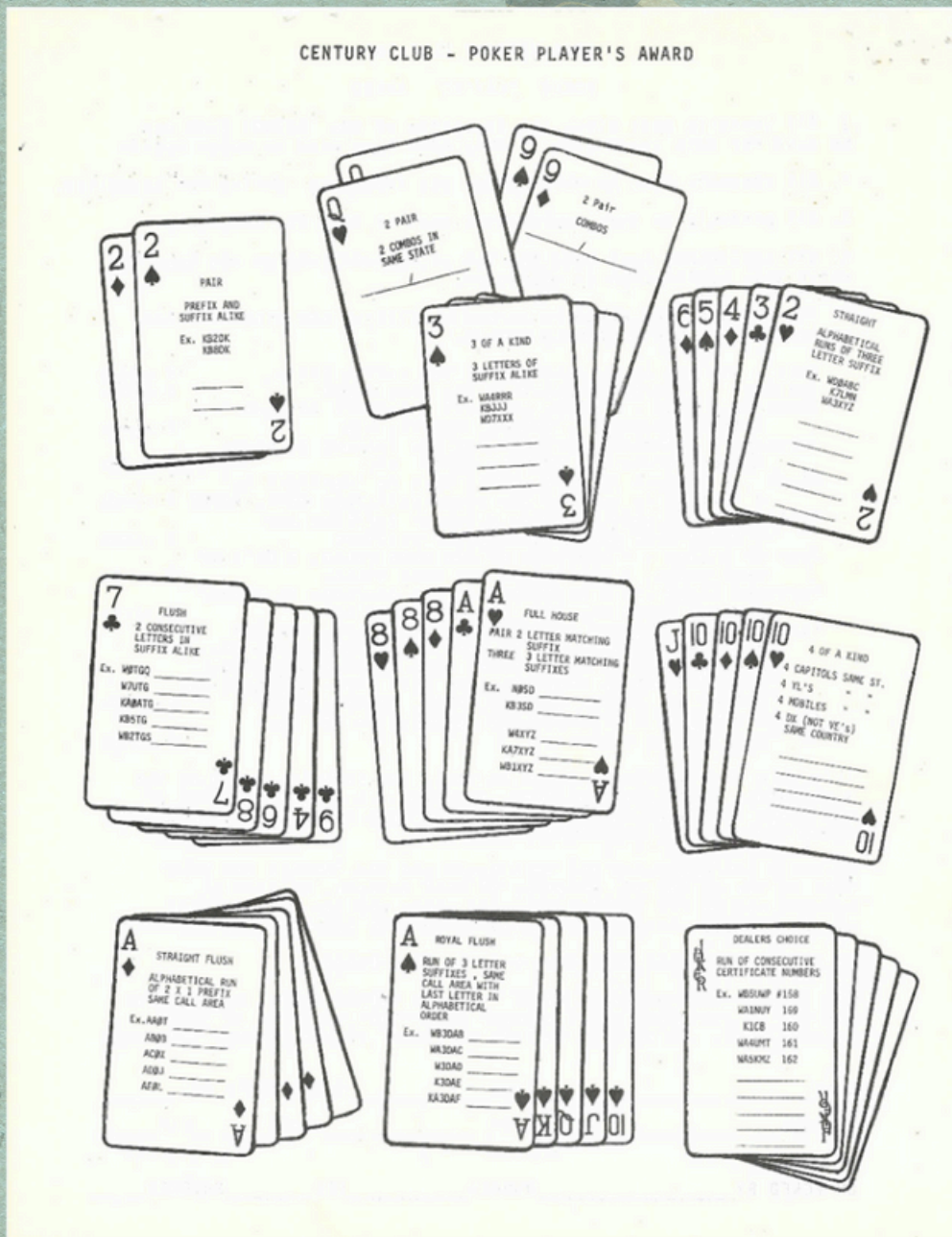
Now, getting back to awards themselves, let's shift our focus onto some potential new ways to leverage your contacts.

Award Improvements

Your Awards Committee has been hard at work at times other than sleepy time, meal time, and lawn mowing time, reviewing our copious collection of awards with improvements in mind. We feel that we have some important, well-thought-out ideas that will enhance the membership experience and make some tired old awards more interesting. Please read on for the salient details.

Poker Player Award

The Awards Committee, in its never-ending attempts to keep members entertained (and mildly confused), is always looking for ways to make net participation more "rewarding." The Poker Player Award, a relic from a time when radios still had vacuum tubes, remains one of the most arduous challenges in the Club's playbook. But because it's a mandatory step on the road to a Master's Degree, we can't just overhaul it—lest we upset the delicate balance of an already Byzantine award system. Still, we're up for a challenge, so here are our latest brainstorming (or fever dreams).



1 - Original Poker Player Application (ca. 1980)

First up: Wild Deuces, Because the Board Can't Do Math

Originally, a "Wild Deuce" meant contacts with holders of a 3905 Century Club award certificate numbered "2." Unfortunately, as time passed, those holders became rarer than a Board member answering emails. So, in their infinite wisdom (read: complete lack of foresight), the Board patched the problem with a mind-bending amendment that broadened the Wild Deuce criteria to include certificates numbered 22 and those ending in 02. Shockingly, they somehow forgot numbers like 222 and 2222, because apparently, basic counting is hard.

We see this as a problem because, much like money and questionable Club rulings, *you can never have too many Wild Deuces*. At this point, everyone with a decent award portfolio is one, but those holding numbers 222 and 2222 feel left out (and rightfully so—nobody likes being shunned, except possibly the Board of Directors, who seem to enjoy it).

Our Genius-Level Proposal: Even More Wild Deuces!

To truly embrace the spirit of this mess, we propose that any contact where both signal reports are 22 automatically qualifies as a Wild Deuce. Enough of them should exist to make everybody happy! But wait, there's more!

The Bluffer's Endorsement

Right now, the Poker Player Award is not endorsable, but with all these new Wild Deuces running amok, we saw a chance to add yet another layer of absurdity. Enter: The Bluffer's Endorsement.

To qualify, you must complete a whole new set of confirmed Poker Player hands for the band/mode on which you hold a Poker Player Award's initial certificate with contacts where:

1. Both signal reports are 22 or less.
- 2.1. Neither station could actually hear the other.
- 3.2. Confirmation requires absolute honesty from all parties, including the NCS and the three relays who collectively hallucinated a contact out of static and background chatter.

If this sounds ridiculous, congratulations! You understand our award system perfectly. Applications for this endorsement will be reviewed with the same speed and efficiency as any inquiry to the Board—so expect a response in no fewer than three geological epochs.

100-Point Award "Simplifications"

A year ago, as reported in the March 31, 2024 Awards Committee Report, several members lodged an official complaint that the 100-Point Award was too difficult, allegedly forming an unfair barrier to entry into the club's already exclusive awards system. The Awards Committee, always eager to fix imaginary problems, embarked on a "study" of the issue with the goal of drafting a motion for the Board of Directors by April 1, 2025. After extensive deliberations—punctuated by coffee breaks, naps, and extended debates over what is causing the increase in Peter's noise level—we are proud to announce that we are moving forward with our groundbreaking proposal. Let's review the key points of our major progress.

Enhancements to the 100-Point Award

- **Redefining "Two-Letter Call Signs":** Under this revolutionary reinterpretation, any call sign containing at least two uppercase letters qualifies. This rule stems from the Board's infamous 2003 decision that lowercase letters in call signs were inherently invalid, a ruling that remains the gold standard of pointless bureaucracy.
- **Expanding "DX" Definitions:** To make DX contacts more accessible, any neighboring state now counts as DX—unless you're on 20 meters, where only New Jersey qualifies as DX. (Why New Jersey? No one knows. Probably something to do with revenge for past signal reports.)



- **Dropping the Bar to 85 Points:** Because 100 points is clearly asking too much, applicants can now qualify with just 85 points—provided they can prove they:
 1. Don't own an amplifier, or
 2. Are using an antenna so terrible that net control weeps every time they check in.
- **Eliminating the “Must Be on Club Nets” Rule (Almost)**:** The Committee briefly entertained the idea of allowing award contacts outside of 3905 Century Club nets, citing the fact that some members find net schedules "inconvenient"—especially those who spend their daylight hours activating parks and their evenings asleep by 7 p.m. Sadly, the Committee ultimately rejected this proposal for fear of inducing mass hysteria (or worse—Board meetings that run past bed time).

Final Verdict

The Committee resolved 4-0 (thankfully, the Chair didn't get to vote) to greenlight the 100-Point Award Improvement Project for official presentation to the Board of Directors on April 1, 2025. Whether it passes is another matter entirely—odds are 50/50, depending on whether the Board members have read the proposal in its entirety.

Closing Note on Behalf of the Awards Committee

As a reminder, the club's leadership takes its role extremely seriously. By "seriously," we mean "whenever it's convenient and doesn't interfere with dinner plans." Please direct any complaints about these award updates to any Club reflector, where they will be properly ignored, or to AIM, where they will be incorrectly answered by the usual, self-appointed, non-authoritative “experts”. Many thanks to ChatGPT for its assistance in writing the above. Now, on to other, less ridiculous April awards business.

Sunsetting Awards

On May 1, 2025, we will archive several unpopular awards. A year ago, the Board committed to this action, giving members the opportunity to apply for them before they disappear.

- 12-Month Sequence
- High Point Hiker
- High Point Mountain Goat
- Low Point Explorer
- Low Point Seeker
- Oldest Established Towns (both versions)

Area award managers will accept applications for these awards through April 30, 2025. After that date, they will reject any applications.

Those who have earned certificates for these awards will keep their bragging rights in perpetuity.

Until Next Time...

I always enjoy writing my April column, which I hope has tickled a few funny bones. With summer approaching, I'm looking forward to writing about lots of well-earned awards in our next issue. In the meantime, stay healthy and keep those applications rolling in!

Eyeball 2025 Information

Submitted by: **Clay WA6LBU (host)**

Greetings All,

The 2025 Eyeball will be in Guthrie, Oklahoma. Dates for the event are August 14-17, 2025. The location is the Logan County Fairgrounds Education Building, 215 Fairgrounds Rd, Guthrie OK 73044. This site is just a few minutes west of I-35. This is the second Eyeball to be held in Guthrie and the third in Oklahoma. Many referred to the area as the Crossroads of America because Interstates 35,40 and 44 cross a few miles from each other in the center of the state just a few miles south of Guthrie. This makes our town an easy trip from anywhere in North America.

Guthrie is a town full of history. It is the county seat for Logan County. It was the first capital of the State of Oklahoma. In 1910, Governor Charles Haskell called a special election to decide a permanent location of the capital and Guthrie lost to Oklahoma City. Guthrie residents are still salty about the loss. Elmer McCurdy, a famous outlaw was killed by a posse in the early 1900's. Elmer's autopsy was never paid for, and the Pawhuska County Coroner placed the body in a wooden casket and left it in a back room where it mummified. A few years later, someone claimed the body and transported it to California where Elmer spent 60 years as an exhibit in various side shows. The territorial museum in Guthrie heard of the situation and requested Elmer be returned to Guthrie for burial. These and other colorful stories can be explored at the Oklahoma Territorial Museum that is a mile from the Eyeball site.

Many of the downtown buildings are at least one hundred years old. One such building currently houses a Federal Court and the Post Office. Many of the buildings are now retail shops and restaurants. One can easily browse downtown in a couple of hours on foot.

Registration

The registration is \$90.00. If you want to register now, you can send me a check or money order to my QRZ address, made out to Clay Mayrose.

You can also use the following:

- Venmo to my phone number. 405-201-6343
- PayPal; wa6lbu@gmail.com

Matt, K2YS is working on the Eyeball webpage, the electronic links will be there.

If you have special dietary requirements, let me know privately. Chef Caroline is well adept in these matters.

I am building a social media footprint for the under: 3905 CCN Eyeball 2025. I will build an Instagram and X account to pass information. I will put the links to those out in emails and on Facebook.

You can operate from the Capital (Oklahoma City) 25 minutes south. If you are a POTA activator, there are two entities in Guthrie. One more entity is about 30 minutes south and several more that are less than two hours away. I will research the park numbers and post them later. The two Guthrie entities should be close enough to do the QRP nets. (one mile) I will have to evaluate that and get back to you.

Here are the places to stay in Guthrie (listed best to worst)

- Holiday Inn – 2227 E Oklahoma Ave Guthrie 405-293-6464 (free breakfast)
 - This is the best choice according to the Emergency Manager
- Hampton Inn – 401 Cimarron Blvd 405-293-9595
- La Quinta --406 Heather Rd. Guthrie 405-293-6000
- Sleep Inn – 414 Heather RD. Guthrie 405-260-1400
- Territorial Inn – Do not stay here.

Additional accommodations are available in Edmond Oklahoma which is 30 minutes to the south.

- Hilton Garden Inn – 2833 Conference Drive Edmond 405-285-0900
- Hampton Inn – 300 Meline Dr Edmond 405-844-3037
- Fairfield Inn – 301 Meline Dr Edmond 405-341-4818
- Home 2 Suites -- 321 Meline Dr Edmond 405-285-8380
- La Quinta -- 200 Meline Dr Edmond 405-513-5353
- Holiday Inn Express -- 3840 E 2nd St Edmond 405-844-3700
- RV – Guthrie
- Cedar Vally RV Park 725 Masters Dr Guthrie 405 282-4478 (This is the best choice according to the Emergency Manager)
- Pioneer RV Park – 1601 Seward Rd. Guthrie 405-282-3557 (Just off Interstate 35)

It is an honor for me to host the 2025 Century Club Eyeball and I am looking forward to seeing everyone.



Guthrie - Historic District Downtown



Capital Publishing Building



Scottish Rite Temple

Updated QSL Guidelines (Effective 01 March 2025)

This page explains QSL requirements and offers a non-exhaustive list of methods for sending them. Other methods may exist; consult your Area Awards Manager with any questions.

QSLs form the basis of the 3905 Century Club awards program. QSLs can be obtained through traditional methods or electronic confirmations. The Century Club does not mandate a specific medium.

Each award applicant must have a QSL for every contact listed on an award application. Electronic links to the confirmation and screenshots of a log are not acceptable.

Required information for QSLs:

- Confirming operator's call sign and location (US state, Canadian province, or DXCC Entity)
- Contacted station's call sign, including any DX modifiers
- Date and time (UTC)
- Radio band or frequency or both
- Communication mode (SSB, RTTY, PSK, CW)

For Mobile or Portable QSLs, also include:

- Type of operation (Mobile or Portable)
- Location of the operator

These are the minimum requirements for QSLs.

Add the following information if applicable:

- Progressive award numbers
- Officer or VIP positions
- Wild duce numbers
- Note if the net is an “early” or “late” net
- Include National Park Name, Tripoints, High Points, Low Points, etc.

Ways to QSL:

- Mail a card directly to the station
- Use the 3905 Century Club bureau
- Email directly to contact
- Electronic methods such as: eQSL, QRZ, LoTW
- There may be other ways. Check with your Area Awards Manager if you have questions.

QSL tools you may want to consider:

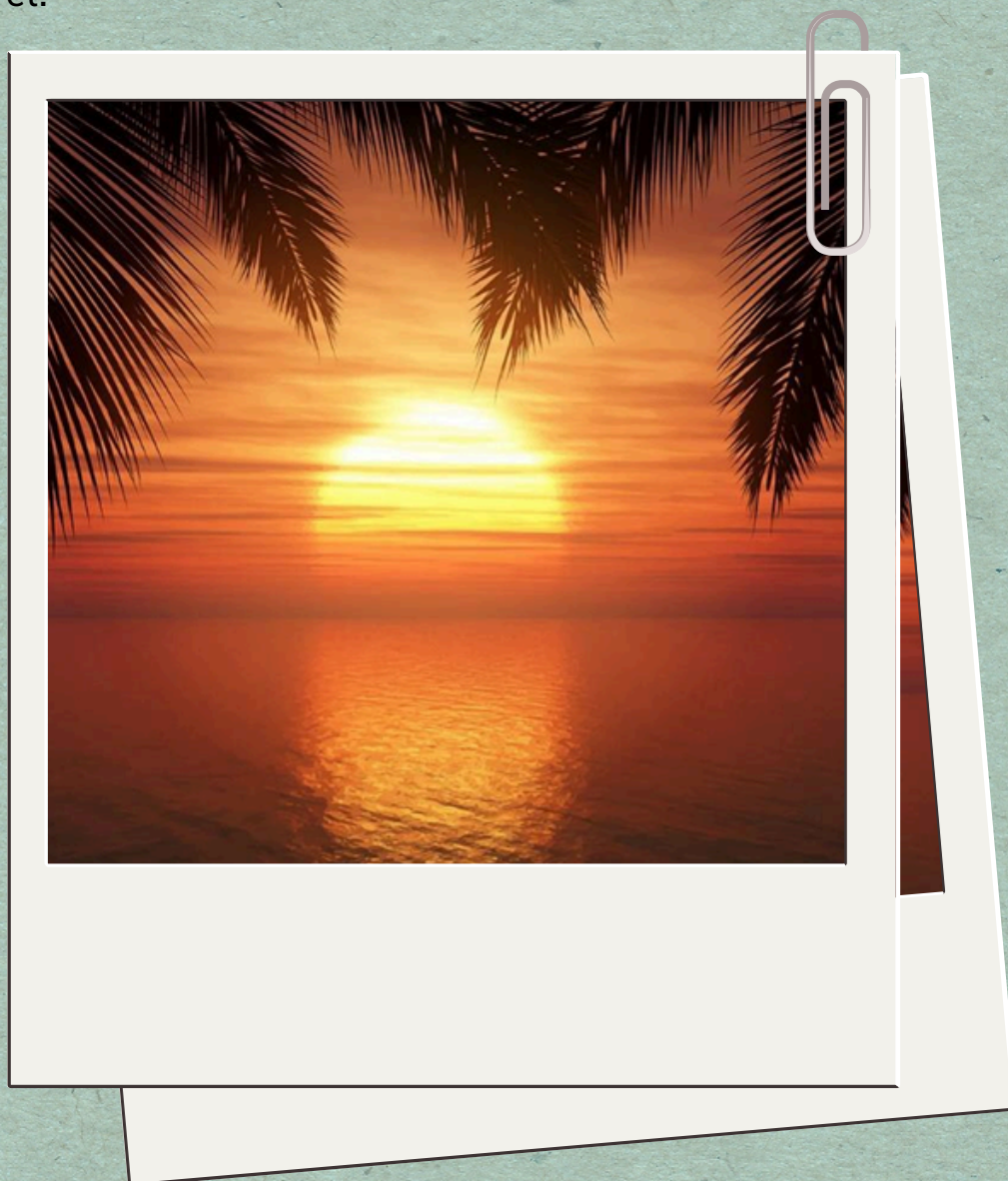
- Quick QSL [Click here](#)
- CCLogger [Click here](#)
- QSL Wizard [Click here](#)
- QSL Maker [Click here](#)

Please visit the club website for photo examples,
[Click here for 3905ccn.org](http://3905ccn.org)

Caribbean DX-Upcoming Trip from KL7JR

Submitted by: **73, de Yukon John KL7JR**

My next big trip is coming together. I rented a VRBO house on the Caribbean Island of Saint Martin which is home to two countries, France and the Netherlands. Did that get your attention? Time frame is June15-23 plus or minus a day for travel.



FS/ KL7JR on Saint Martin and PJ8/KL7JR on Sint Maarten. I will also bring club KL7RST (card requested) and do mobile as well.

The house sits near the border of both countries. See you on the nets!

Do You Remember Your HF Radios?

Submitted by: Yukon John KL7JR

I have had a few HF ham radios over the years since first licensed in 1977. I started out using a new Siltronix 1011D on 10 meters. I ordered the 1011C but was told I'll get the improved 1011D model. It was a good radio, 10 and 11m only, but I needed more than just one ham band since I upgraded. Then I purchased a used Ten-Tec 544 "Triton IV" transceiver in 1979. [VHF didn't do much for me. I had to talk across the pond not the street. In the early 90's I did enjoy 2m packet radio in Anchorage]. My Ten-Tec Triton IV had a lot of issues surface after a few months of use. It was an impressive station alright with matching remote VFO and power supply!

Siltronix 1011D



Ten-Tec 544 Triton IV

A friend talked me into his used Atlas 210X by Swan, (remember them?) he had a pair of them. The later models made by Swan were grey in color. I enjoyed the radio for a year or so but then it started drifting a lot. How embarrassing, from Illinois I'm checked in to a 40m MARS net and had to manually move the VFO back after I transmitted. It would drift up several kc's. Repairs would have cost more than the radio was worth. I dumped it for my first Yaesu, a new FT-747GXII. I really liked the FT-747GXII for its simplicity.



Atlas 210X

I liked it so much I bought a second rig as Yaesu was discontinuing the 747. Now fast forward a year and the new FT-840 was introduced. I had to try one. It too was a joy to use! To me, the FT-747 was better appearance wise.



Yaesu FT-747GXII

Yaesu FT-840



The FT-840 replaced the old workhorse FT-747GXII. They both were pretty much “turn on and go” type rigs. Both served me well in Alaska and the Yukon (1990s) and have good reputations in Yaesu history. I activated over 300 islands in the US Islands awards program which I started in 1998. My FT-747 GXII took many a canoe trip with me coupled to an Outbacker vertical. On the Icemobile I bolted the Outbacker to the top of the RV ladder which worked out quite well. Next, I moved on to Kenwood’s TS-50 and TS-570D models (1995) which I thoroughly enjoyed for many years. I had a couple of each. Lucky for me, I only lost the 747 and an RV battery when my canoe tipped over on the cold Columbia River near the WA and OR border. Out of no where a gust of wind hit my canoe broadside. I was glad I had a life vest on!



Kenwood TS-50

Kenwood TS-570D



I had a ball using this little easy to use rig. The band modules cost around \$15 each. I got 10, 15, 20 and 40m modules. I did a lot of contesting from the Yukon with this rig. I was amazed what 50 watts and a mobile antenna could do under fair conditions. The rugged little Ten-Tec 555 "Scout" (1999) with its "plug in band modules" (see 20m band module above) was a joy to use. Just plug in a module and make contacts! The band modules were optional and available for all bands (I don't remember if a 160m module was available). I made thousands of DX contacts with 50 watts and an Outbacker vertical either mounted on my canoe or motor home, the original Icemobile. Now those were the good ole days of simple to use HF rigs that were fun to operate! These economically priced rigs appealed to new hams and those seasoned hams looking for a basic mobile, portable or base "no frills" rig.

[Around 1993 I tried an Icom mobile rig, model 700 something which I totally disliked. I thought it was the most user-unfriendly rig with all those drop-down menus I had ever used. After 2 weeks I sold it and that was it for me and Icom]

Kenwood TS-590 SG



My first TS-590S was in use from the Dominican Republic in mid 2011.

I really enjoyed that rig which pretty much operated like the old TS-570D. The learning curve was super easy! A local ham friend, HI3K, on the island talked me out of it so I ordered the new TS-590SG model in 2016 when we relocated back home. It was awesome creating pileups every time I cracked the mic as HI3/KL7JR! The built-in voice recorder really got a work-out over the years. In 2018 I had to have another TS-590SG for the Icemobile (3,4 and 5). Been using it on my portable and mobile jaunts ever since. I use a Heil Goldline GM-4 mic or a Heil hand mic with DX cartridge.



Ten-Tec 599 "Eagle"



Alinco DX-SR8

When the Ten-Tec 599 "Eagle" hit the market, I was immediately drawn to it from past experience with my Ten-Tec 555 "Scout". There was no comparison. The Eagle came with the typical high price tag of Ten-Tec but was of CB radio quality I thought. After a month I sent it back to Ten-Tec for repairs. Many functions didn't work. Their crappy repair work left me sour on Ten-Tec. Apparently, this was the beginning of their downfall. The Alinco DX-SR8 was a nice rig and I received many good reports using it. The knobs and buttons were too hard to grasp and you almost needed a magnifying glass to read the functions. I soon tired of that and sold it.



Kenwood TS-480SAT



Yaesu FT-891

I had heard so many good reports on the Yaesu FT- 891 that I had to see for myself. A compact rig that's easy to use according to Jeff K4JEL! I just haven't gotten around to taking it out of the box yet, but I'm sure I'll like it!

73, de Yukon John KL7JR

Back To The River

Submitted by: **Yukon John KL7JR**

Since I'm operating at a disadvantage at my apartment, it gives me the excuse to do more mobile and portable operating. 160m is on my radar this season. Don't tell anyone but I purchased another antenna instead of homebrewing my own. My homebrew 160m T vertical, 160m Inv L and 160m EFHW have suited me just fine over the years tuning all bands except 75m. I needed to improve on that. The Ultimax DXtreme EFHW, 160-6m at 124 feet long caught my attention



This antenna is available in the following lengths: 33', 53', 72', 88' and 124' (2 kw rated). I emailed Albert, CEO of Ultimax for pricing and any special installation requirements for 160m with the 124-foot model. I was quoted, shipped to WA for a whopping \$181.75...yikes! It had better tune 75m, hi hi!

Ultimax DXtreme EFHW- 124 feet long

www.ultimaxantennas.com

Back to Home Depot for 1.25-inch (mast) PVC pipe and 1" PVC for the end supports plus a few couplings to connect the pipes. I should get the apex at 20 ft and the end supports at 16 feet in an inverted V configuration. I just got tired of erecting 2 antennas when I want to work the CCN late nets portable. I also purchased 4" black sewer pipe to mount on top of the rear bumper (sewer hose receptacle) of Icemobile V to store the mast and end support pipes.

Couplings were glued to one end of the pipes for fast attachment to each other. Rebar was driven into the ground on an angle to accept the vertical pipes that sit down on it.



PVC pipe stored in/on rear bumper of Icemobile V.



1.25" mast pipe on top and 1" end support pipe on bottom. All 8 ft sections.

DAY 1

It's February 15th as I usher in my 75th birthday. I'm all set for the late nets, especially getting on 160m again. Health reasons kept me QRT for about 6 weeks giving me a late start for the 160m season. My portable QTH (again) is Jackson Creek Fish Camp, near Mattawa, on the mighty Columbia River some 40 miles from home.

Conditions on 75m early net were rather disappointing. AA1QW/p WA relayed me in and later we exchanged 5x9's. KB0EL was also worked. No one else heard. 160m late net was another dud for me. I never heard any of the 3 check-ins. 40m late net was much better. KB1GGS, KO4MEX, K4JEL, AC2MT and W10TW made my log book. I enjoyed S2 noise here compared to the S9 I have at home.

I brought club WE4FUN/p WA. Earlier I used K8ICE/p and KL7RST/p. On the 75m late net, under tough conditions again, I was able to work AC2MT, KB0EL and W6PNY. I could barely hear NCS KB0EL on the 160m late late net. Before the 75m early net I worked Hawaii on 10m, Japan on 12m and CA on 40m to kill time.

DAY 2

Two inches of new snow dusted the desert floor. I'm glad the 6 inches that was predicted never happened. On the 20m Sunday net, K6ODI relayed me in.



All I could scare up was AA0HF and KO4LEM. Propagation was just poor for the west coast.

Later on, I made a few stateside contacts on 10, 15 and 17m just to get a better feel for the antenna. The 75m early net produced only one contact for me- KF7HNC. We exchanged 5x9's. No one else heard. W7DZX in Oregon relayed me in. The best conditions so far go to the 40m late net with W6PNY as NCS. KB8UEY/p OH, W8BI, KO4MEX, KN4CQB and W5UOT made my log! Thanks, Bob, for staying up late to work me. Rob, I know you've been chasing me for some time, it was good to finally work you too.

Ultimax recommends installing the feed point 6 feet above ground and to use a ground rod or radials- not both. I took that advice even though I had my doubts. I always put my EFHW feed points less than 2 ft above ground and sometimes employ a ground rod with radials. Next time I'll do it my way!

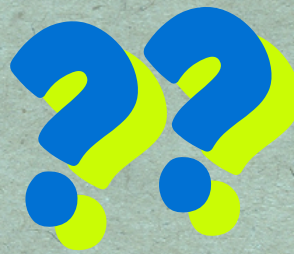


In the crock pot it's flank steak, spuds, onions and carrots simmering in soy and honey sesame sauce. Simple to make on my camping trips.

In conclusion, it was nice to finally do 75m early net even though conditions were challenging. It was also good to work some of the regulars again. I'll go back out in a week or so and try the Ultimax again. I was impressed how easily it tuned all bands, especially 75m. As is, SWR was under 3 on all bands except 40m. So hopefully propagation will improve for the west coast. 160m left me very disappointed. Thanks to all the NCS's for working with me on this adventure!

73, de Yukon John KL7JR

A Question For The Members



Submitted by: Carli, N1CD

Now that we can accept QSL cards digitally, I would like to know:

How members organize their cards? Do they print them out?

How do they electronically file them so they can easily find them for awards?"

CQ Ø7 GRID		ITU 11 EK55XN			<input checked="" type="checkbox"/> EARLY <input checked="" type="checkbox"/> 4Ø m		<input type="checkbox"/> LATE <input type="checkbox"/> 8Ø m		<input type="checkbox"/> 16Ø m		
					CONFIRMING QSO WITH		DATE		UTC		MHZ
AC5VY		28	(5)	00	103		7238.5		55 59		USB
Regino J. Denis P.O. BOX 1224 SAN PEDIO SULA HONDURAS, C.A.					QSL VIA KB5IPQ			PSL <input type="checkbox"/> TNX <input checked="" type="checkbox"/>			

From the Archives

(From the 2nd edition of the 2005 Centurion)

Optimizing Free Progressive Award Applications by Kevin WMØF

Ever dream of the day when your area awards manager does not even bother to check your awards, because they are always 100% right. I know, there are other things I should dream about in my old age, hi hi. However, after sending in a couple big messes to Nadine WAØSMQ, bless her heart, I worked out a method to cut down on the mistakes. So, if you are still reading at this point, here are few ideas you might try.

It really helps to have a computer log of some kind. I use Prolog2K, there are many other choices. Prolog2K not only keeps track of all my CC net contacts, separated by band and mode, but it also allows me to attach a notation to each contact when it is used for an award. That is really important, because I let the computer keep track of what contacts I have already used. It helps a lot on future progressive awards, if you can sort out those contacts already used and make a list of what you have available. With that...

I always start with the Prefix or Level III page. That is the really fun page where you have to have 5 unique prefixes for each state except AK and HI. Here is what I do:

- If I can, I fill the first 3 contacts in each state with K, N, and W prefixes. These are usually the most common, so I always use one each of these.
- Then, I fill the remaining spots. I look at my log and pick one each from any prefix that I have several of, saving the unique prefixes for future applications.
- For the prefix page, I try to use 1x3 or 2x3 contacts ahead of others. That saves the 2 letter cards for other pages.

- I also try to save mobiles, YLs, combos, and capitals for other pages. Especially those from the states I tend to get a lot of, like IL, TX, etc.
- Wild Cards: This is a whole subject of it own, which could fill up another article. I will just say, I use as many wild cards as I can on each application to allow me to save my rarest contact locations for future applications.
- For those states that are particularly hard to get, I use a wild card AND a Super Wild Card on that line. SWCs are Masters' cards. Remember, a SWC can only be used once. You might want to save those for other awards, so that is a choice to consider.

I usually fill in one state at a time, pulling the cards from my card file. I double check the frequency, mode, and location when I pull the card, since I sometimes make a mistake and file cards in the wrong box. A good filing system for your cards makes this a lot easier, but that is another article and I am sure my filing system is nothing special. I would love to read about card filing systems other people use.

Once I finish with the Level III, Prefix page, I move on to the Level II. This page is also tricky, but in a different way. You need a total of 400 points on this page, 5 points for each contact used (10 points for DX, if you use them here). On this page, here is what I do:

- I check what I have in YLs, combos, and 2 letter calls. I use all of these I can, but only those from common states. I fill in the right side of the page with YLs, Combos, and 2 letter calls.

- I don't use DX on this page. The next page requires 15 DX contacts for each progressive award. I save all my DX contacts for the DX page, and for future awards.
- Finally, I fill in the States Column along the left side. I start by filling in all the most common states.
- I try to avoid using mobiles, state capitals, combos, YLs if I can.
- I never use HI, AK, or other rare (for me) states in this column. I save up all those rare ones for future progressive awards.
- I also try to use common prefixes in the states column. I save those rare prefixes for the Level III page on future progressive applications.
- Again, I check the band, mode, and location of each card as I pull it from the file. Misfiled cards are where I usually make mistakes, so I try to double check as I go.
- Finally, I double count this page. Since you don't need to fill out every line on this page to add up to 400 points, it is easy to come up short or long.

Ok, next I fill out the Mobiles and DX page. I follow just a couple rules here:

- I try to use mobiles with common prefixes (K, N, W, KB, KC, etc) and those from common states for the 10 required mobiles.
- DX: You must have 5 unique DXs on each application. I start by filling in the first 5 DXs with 5 unique ones.

- Then, I fill in the remaining 10 DX contacts with my most common DXs. Canada is most common for me. Mexico and Cuba are also common in my log.
- Again, I check the band, mode and location as I pull the cards and stack them on the pile. Whew, this is a lot of work. I cannot imagine how people do this without the help of a computerized log.

Finally, I fill out the Level I page. There are again a few rules I follow to optimize the use of contacts:

- First, I try to load up the state capitals list. I only use state capitals from my common state list. I don't use HI or AK or DE or other rare states here. I save

those for future progressive awards. I use as many contacts from state capitals as I can, after all, these are worth 10 points on this page.

- Next, I fill in the remaining contacts I need to add up to 100 with common, 2 letter calls from common states. You can use up to 20, 2 letter calls if you want, even though the application only has room for 10.
- I don't usually use DXs, YLs, and combos on this page, hoarding those for the future.
- Did I forget to check the band and mode?

One final note, I usually wait to fill out and submit a progressive award until I have enough unused contacts for next 2 or 3. That allows

me to pick and choose using the rules I listed above.

For me, there is no big hurry to get these done. I will likely never catch up with the real progressive champions out there (N2XTT, K8MZA, WB2RWT, K5FNS, WY8V, and others come to mind).

So, there you have it. Every time I fill out one of these awards I swear I will never do another one. Each one is a lot of work. But then the cards start to pile up and I get inspired. Your mileage or inspiration may vary.

73, Kevin WMOF

April 2025 Club Events

Note: Regular Board Meetings are always held on the second Saturday of each month, local time at 9PM Eastern, 8PM Central, 7PM Mountain, 6PM Pacific.



Next Meeting:
3905CCN Board Meeting:
Saturday, April 12, 2025, and
Saturday, May 10, 2025.



Did you know that videos of all Board Meetings are posted on the Club's YouTube channel? Courtesy of the Board and produced by Sammy KB1XP, you can view them at: <https://www.youtube.com/@3905CenturyClub>



Weekly Zoom Meeting on Wednesdays at 01:30pm Pacific Time. Check your email for the Zoom log-in information.

Be part of the next issue!

Send in your articles - remember the deadline!

Centurion Deadline Reminder: Please remember my deadline is the 20th of each month for inclusion in the next edition.

Please send your articles to AA1QW@startmail.com. Thank you.